



**sicon**

# GENERAL PURPOSE CONVEYORS BELTS

**SCON Conveyor Belts** were introduced over 20 year ago in India. Today, with over two decades of experience in design, manufacture and application engineering with constant up-gradation to match changing industrial needs. SCON is still the most preferred choice of the customer. Backed by unbeatable combination of technical and development skills. SCON outperforms all competitive brands on every critical criterion.

Our product experts can go on-site to offer options and design application-specific belting solutions. We'll recommend the flat or fabricated belt specification to provide the ultimate results for the best value. Our trained and highly experienced technicians will build the solution from any compound — rubber, PVC, urethane — and in any configuration. Put our experts to work for you.

**OUR HIGHLY TRAINED AND DEDICATED SPECIALISTS** fabricate essentially any belt configuration to meet a wide range of applications. That's value that translates into longer run times and leaner operations.

SCON offers lightweight belting for package handling, warehousing, and assembly line production. Versatile, strong, and hardworking belt products designed specifically to meet individual application needs.

We also have a vast selection of heavy-duty belting products with a broad range of tension ratings and cover compounds to handle a wide variety of products. Our belts are designed for applications requiring resistance to: extreme temperatures, oil, hot asphalt, chemicals, grease, animal fat, impact, tearing, high speeds, static build-up, combustion, abrasion, and severe weather conditions.

We have the inventory to meet your immediate needs and the ability to quickly produce fabricated belts to solve your particular material-handling problem.

## **Minimal Elongation**

Our engineers have developed unique fabric designs to ensure low and controlled stretch of all-synthetic SCON belting even in long-haul application.

### **Superior Belt Consolidation**

High pressure vulcanization coupled with specialized fabric treatment result in excellent physical and chemical bond ensuring adhesion levels way above industry standards ,eliminating cover stripping and ply separation.

### **Outstanding Impact Resistance**

Specially compounded extra-resilient interplay rubber and the inherent transverse flexibility of SCON belting make it the first choice in high-impact ,heavy –duty applications.

### **Perfect Edge Constructions**

State –of –the –art edge preparation system provides a uniform ,hard wearing ,self-sealed egde. Lacs of kilometers of cut-edge SCON belts used over the year have consistently established their clear ‘edge’ over molded edge belts.

### **SCON Product consistency**

A well preserved tradition of excellence SCON belts have consistently passes through the most stringent quality assurance systems commencing from selection of choicest rubber from the plantation and extensive evaluation of fabric on to rigorous checks on every batch of rubber compound .In process controls coupled with exhaustive finished product evaluation to SCON own standards ensure that every meter of SCON belting is not just consistent in quality it’s the best value for money.

## PRODUCT SPECIFICATION

- Grade M24:** Compound from premium quality natural rubber to provide excellent resistance to cutting, gouging, tear and wear, and Conforms to the maximum abrasion loss value specified for grade M in DIN 22102 of 1970 & IS: 1891 (Part-1) latest.
- Grade N17:** Compounded rubber with improve flex life for moderately abrasive material conforming to maximum abrasion loss Value specified from Grade N in DIN 22102 of 1970 & IS: 1891 (Part I) latest.
- Grade HR:** Specially compounded rubber capable of withstanding thermal degradation for prolonged periods and recommended For handling materials like alumina, ash, clinker, foundary,sand,etc at temperature above 65 degree and up to 120 Degree For fines and 140 degree for coarse materials. &IS: 1891(Part I) latest.
- Grade SHR:** Thoroughly proven in the field this grade had been specially formulated, using selected synthetic and natural rubber, To provide superior heat and abrasion resistance and is recommended for handling material like foundry sand, clinker, Coke wharf having temperature over 65 degree and up to 180 degree for coarse and 160 degree for fines.
- Grade OR:** This cover grade with specially blended synthetic compound is designed to give the best possible resistance to mineral Vegetable and animal oils.
- Grade UHR:** Specially formulated, using selected synthetic rubber to provide superior heat & abrasion Resistance and is Recommended for handling material like hot cement, clinker, phosphate hot sintered ore having temperature over 165 C for coarse and over 180 C for fines.
- Grade FR:** The growing demand for fire resistant rubber conveyor belting was first catered to by SCON with this grade of cover Rubber .Our technologists have developed FR belting to meet as per The Bureau of Indian Standard Specification No. IS: 1891 Part (V) 1993 and the Canadian Standard Association Specification (CSA) No.CAN/CSA-M422-M87 Of 1987 Type C.
- Grade SAR:** Specially formulated from premium quality natural & synthetic rubber to provide excellent Resistance too highly Abrasive material against tear and wear and to the maximum abrasion Loss value for 90mm<sup>3</sup>.
- Grade CMR:** This cover grade with specially blended synthetic compounds provides best possible resistance to different chemicals.

## PRODUCT DESCRIPTION

## **1. M-24 CONVEYOR BELT**

The general fabric conveyor belt is made of EP, NN or Cotton fabric and Finished through the processes of calendaring, firming and vulcanizing, etc.



## **2. Heat Resistant Conveyor Belt**

### **HR (T1 up to 120 Deg)**

HR Conveyor Belts are heat resistant suitable for continuous Temperature up to 120° Centigrade for coarse materials and 100° Centigrade for fines. These conveyor belts are Mainly used in Foundries, Chemical, and Paper & Fertilizer plants etc.



### **SHR (T2 up to 150 Deg).**

SHR Conveyor Belts is used for handling material up to 120° Centigrade for fines and 150° Centigrade for coarse material.



### **UHR (T3-180 Deg)**

UHR Conveyor Belts is used for handling material up to 180° Centigrade for fines and 200° Centigrade for coarse material. These belts are mainly used for conveying Coke, Sintered ore, Pellet and Clinker Etc. Fire Resistant Conveyor Belt



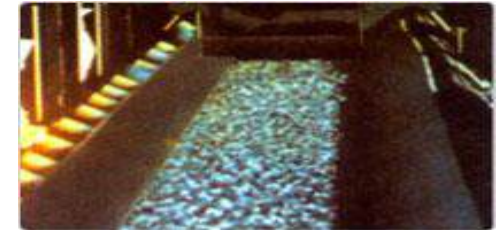
### 3. FIRE RESISTANT CONVEYOR BELT

FR Conveyor Belts are recommended for use in surface application Where material conveyed is exposed to flame. It meets the Indian and International standards. These conveyor belts are mainly used for the typical Applications like Oil treated coal and grain Industries requiring fire resistance and Static conductivity with lower electric resistance. Industry



### 4. OIL RESISTANT CONVEYOR BELT

OR Conveyor Belts are specially made to provide Resistance to mineral oil, grease, vegetable oil and animal fat etc where Conveyor lines causing swelling and sponginess by these Oils. These conveyors Belts are composed of the cotton canvas, nylon canvas, EP canvas and the oil resistant conveyor belt is produced through calendering, forming, vulcanization etc.



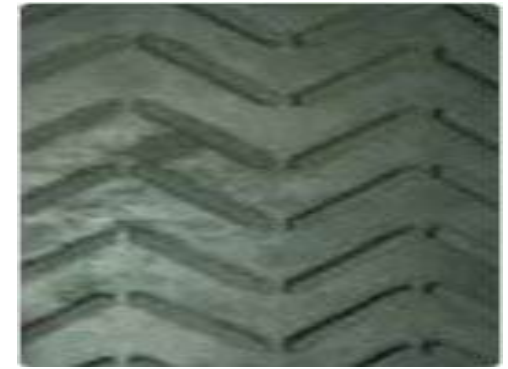
### 5. CHEVRON CONVEYOR BELT

Chevron conveyor belts are specially designed for the effective material handling in the applications where the angle of incline is higher for the material to be conveyed and the material tends to slide on a conventional conveyor belt. Chevron belts are suitable for transporting a wide range of bulk materials and also for unit loads such as bags, bales, crates, sacks etc. Chevron belts can achieve high conveying capacities even at inclinations of up to 40 -45°



## 6. ROUGH TOP CONVEYOR BELT

We are positioned amidst the prominent Rough Top Conveyor Belt Manufacturers in India. Light weight goods, fragile or deformed materials and packed goods like papers, bags, glass, boxes, cartons etc. can be easily distributed with the help of the Rough Top Conveyor Belt offered by us



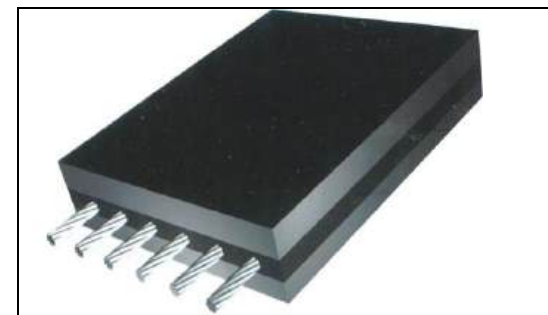
## 7. PVC CONVEYOR BELTS

PVC conveyor belting solutions delivered feature white food grade conveyors as well as Elevator belting that are precision manufactured as per IS: 1891 (Part IV) these are found Suitable for handling of food material that need to be moved directly on belt surface further As these belts are available in whit color finish, these also do not transfer any order as Well as color contamination to food products handled



## 8. STEEL CORD

In this time of stable economic growth, industries are aggressively rationalizing operations. In the transportation sector in which pursuit of economic efficiency is a constant theme, conveyor belts have always played a major role. At SOMI, we manufacture Exceptional High Quality Energy Saving Ultra Light Weight Steel Cord Conveyor Belting, plus a range of specialised belting products for niche application using the world's Leading Manufacturing Techniques with an annual output capacity of over 01 Milion Meters.





## TEECHNICAL DATA

Belt Designation		Maximum Recom- Mended Working Tension (vulcanized Splice)	Carcass thickness	Carcass Weight For M24/N17 Grade belting	Maximum belt width (mm) for adequate load support (material density in T/m <sup>3</sup> )			Maximum belt width (mm) for adequate troughing of empty belt		
Type	Rating	(kN/m)	(mm)	(kg/m <sup>2</sup> )	Upto 1.0	Upto 1.5	Upto 2.5	20° Idlers	30° Idlers	45° idlers
<b>General Duty</b>	250/2*	25	1.8	2.1	650	600	450	400	400	450
	315/3	31	2.9	3.2	1000	800	650	400	450	500
	400/3	40	2.9	3.4	1050	900	650	500	500	500
	500/3	50	3.2	3.7	1200	1000	800	500	500	500
	630/3	63	3.8	4.2	1200	1000	800	500	500	500
<b>Extra Duty</b>	630/4	70	4.4	5.1	1400	1200	1000	500	500	650
	800/4	90	5.2	5.7	1600	1400	1050	500	500	650
	1000/4	110	5.7	6.5	1800	1400	1200	500	650	800
	1250/4	140	6.5	6.9	1800	1600	1400	650	650	800
	1250/5	140	7.3	8.2	1800	1800	1600	650	800	900
	1400/5	155	8.2	8.8	2000	1800	1800	650	800	900
	1600/5	180	8.7	9.7	2000	2000	1800	800	900	1000
	1800/6	190	10.6	11.8	2000	2000	2000	800	900	1000
<b>Heavy Duty</b>	250/2*	25	2.8	3.4	900	650	500	450	450	500
	315/3	31	3.8	4.5	1200	1000	800	500	500	500
	400/3	40	3.8	4.7	1200	1000	800	500	500	600
	500/3	50	4.3	5.0	1400	1200	900	500	500	600
	630/3	63	4.8	5.5	1400	1200	1000	500	500	650
	630/4	70	6.1	7.0	1800	1400	1200	500	650	800
	800/4	90	6.7	7.7	1800	1600	1400	650	800	900





## **SANGHVII CONVEYORS**

124, B-Block, Silver Square,  
Thaltej-Shilaj Road, Thaltej,  
Ahmedabad, Gujarat, India. 380059

Tel: +91 (79) 40020050

Email: [info@sanghviconveyors.com](mailto:info@sanghviconveyors.com)

Website: [www.sanghviconveyors.com](http://www.sanghviconveyors.com)